

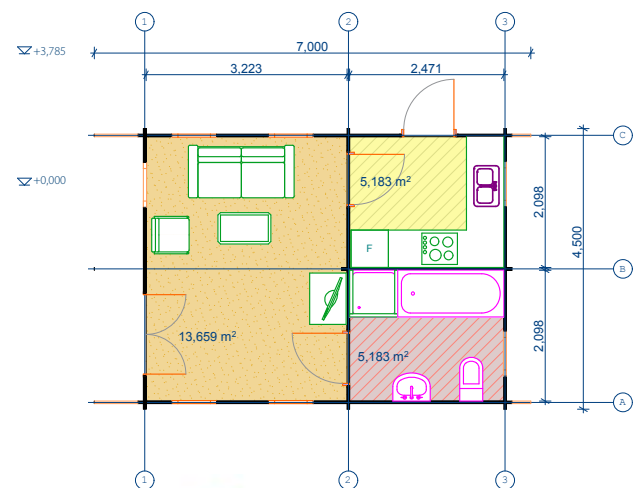
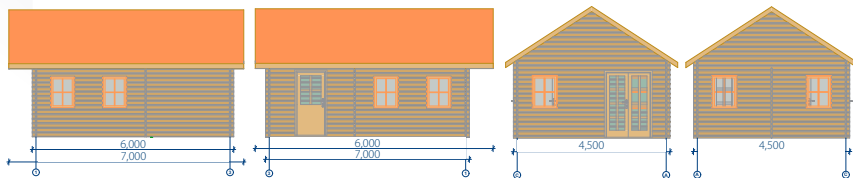
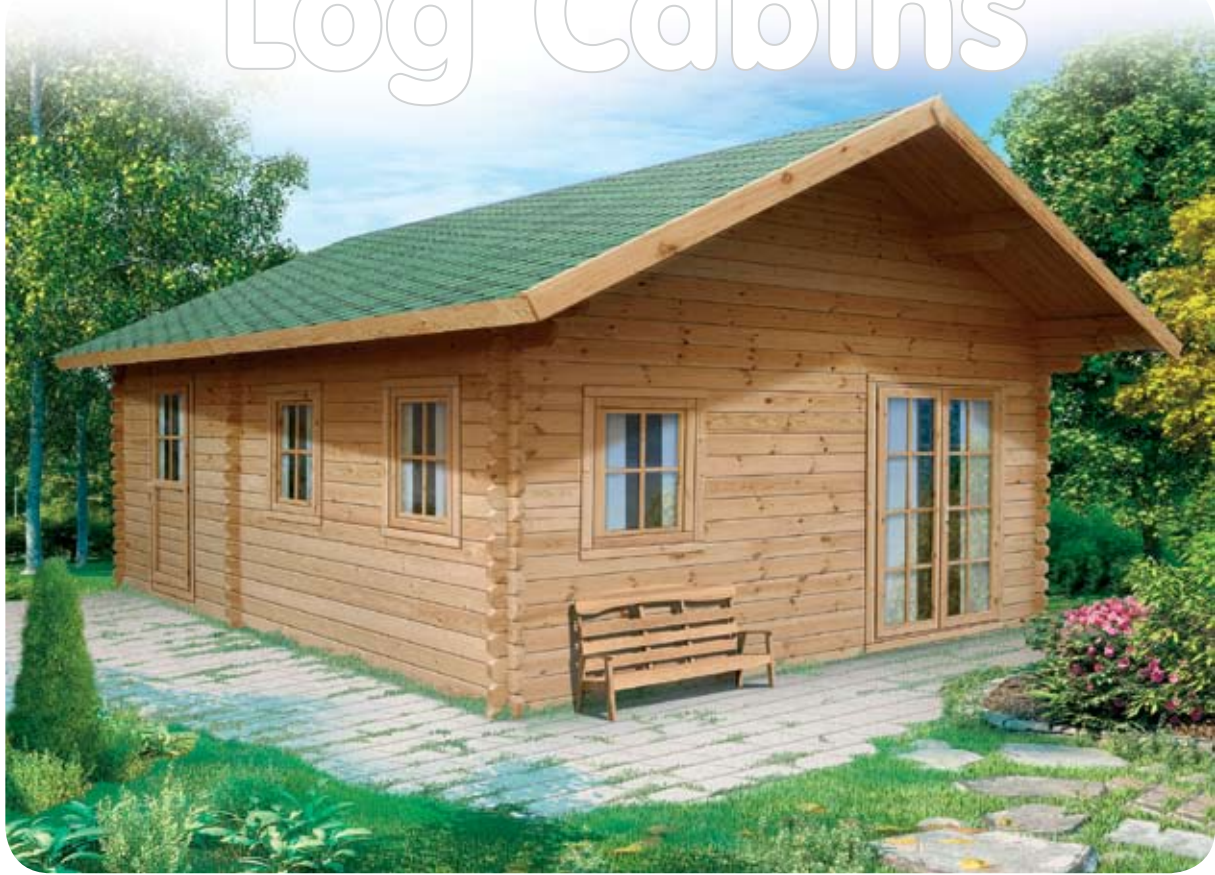
Log Cabins

summer and gardenhouse



Wood for better living

Log Cabins



Norbert

4,5x6 (4,33x5,85) – **UK10050102N**

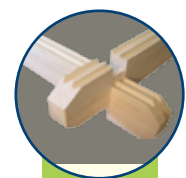
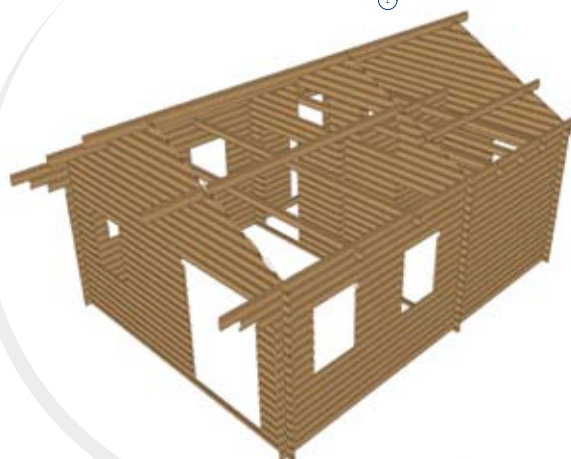
Basement size is shown in brackets (without veranda).

optional extras:

UK10050102V - veranda

UK10050102S - shutters for windows

- Wall thickness 44 mm;
- Double grooved interlock;
- Wall boards are flat faced with softly rounded edges;
- The corbel of the roof around the whole house;
- Canopy – 0,8 m;
- Double glazed windows and door;
- The doors and windows can be supplied either left, or right-hand;
- Big bedroom in the attic;
- Two separate rooms.



(44mm)

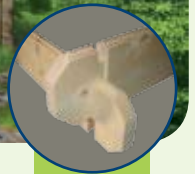
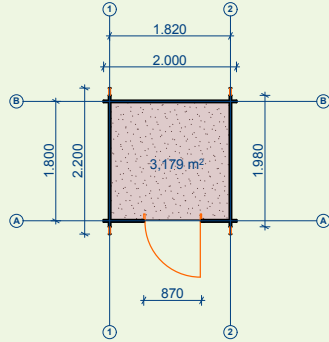
*The cabin includes the floor.
Roofing shingles are supplied as optional extras.*



Bob

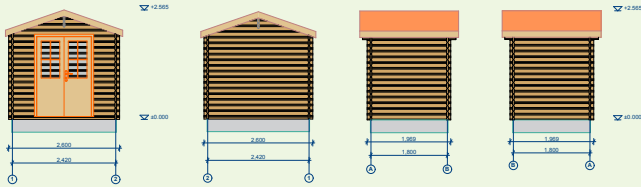
Bob* (2x2) – **UK280050**
 Bob floor kit – **UK280051**

- Wall thickness 28 mm;
- Wall boards are flat faced with softly rounded edges.



* floor kit and bitumen tiles are extra

(28 mm)



Adam

Adam 1* (2,6x2) – **UK280060**
 Adam 1 floor kit – **UK280061**

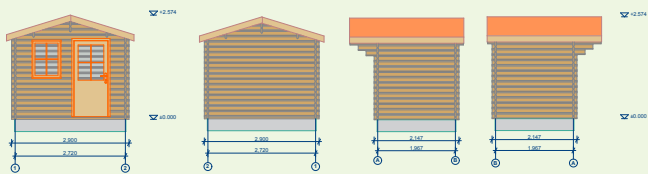
Adam 2* (3x3) – **UK280010**
 Adam 2 floor kit – **UK280011**

- Fast and simple mounting;
- Wall thickness 28 mm;
- Nice toolshed for your garden;
- Big double door in the front.



* floor kit and bitumen tiles are extra

(28 mm)



Witek

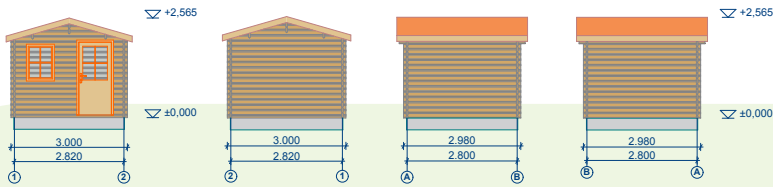
Witek (2,9x2,2) – **UK280020**
 Witek floor kit – **UK280021**

- Wall thickness 28 mm;
- Big 70 cm canopy in the front.



* floor kit and bitumen tiles are extra

(28 mm)



Karol

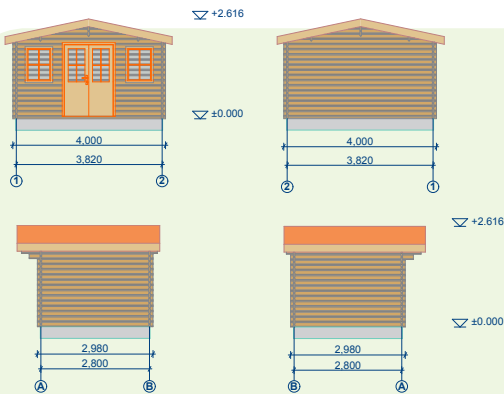
Karol (3x3) – **UK280070**
 Karol **floor kit** – **UK280071**

- Wall thickness 28 mm;
- Great alternative on the attitude of the price.



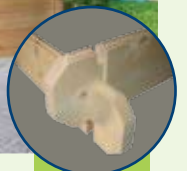
* floor kit and bitumen tiles are extra

(28 mm)



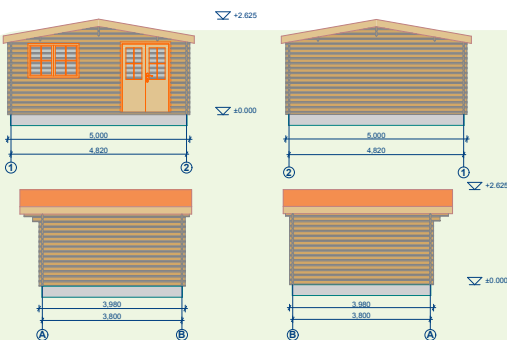
Olga

Olga (4x3) – **UK280030**
 Olga **floor kit** – **UK280031**



* floor kit and bitumen tiles are extra

(28 mm)



Kris

Kris (5x4) – **UK280040**
 Kris **floor kit** – **UK280041**

- Canopy 40 cm
- * floor kit and bitumen tiles are extra



(28 mm)



Waldek

- 3 x 3 m (2,84x2,84) – **UK100489501**
- 3 x 4 m (2,84x3,84) – **UK100489511**
- 4 x 3 m (3,84x2,84) – **UK100489521**
- 4 x 4 m (3,84x3,84) – **UK100489531**
- 4 x 5 m (3,84x4,84) – **UK10048954N**
- 5 x 4 m (4,84x3,84) – **UK10048955**
- 5 x 5 m (4,84x4,84) – **UK10048956N**

Basement size is shown in brackets.

- Wall thickness 34 mm T&G;
- Wall Boards are flat faced with softly rounded edges;
- Double grooved interlock;
- The corbel of the roof around the whole house;
- Large canopy;
- The cabin includes the floor;
- The doors and the windows can be supplied either left, or right-hand.



Log Cabins



(34mm)

Note: Waldek 3x3 m and 3x4 m has single window in front.

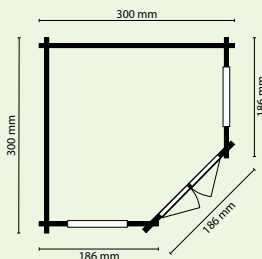
Roofing shingles and veranda are supplied as optional extras.

Nina

- 3x3 (2,85x2,85x1,60 side x 1,75 front)
- **UK1002000128**

Basement size is shown in brackets.

- Beautiful corner summerhouse;
- Ideal for left or right hand corner of garden or yard;
- Wall thickness 28 mm.



(28 mm)

Roofing shingles are supplied as optional extras.

Actual design may be slightly differ from the picture.



Laura

- 3 x 2 m (2,84x1,84) – **UK10040012**
- 3 x 3 m (2,84x2,84) – **UK100400091**
- 3 x 4 m (2,84x3,84) – **UK10040036TD**
- 4 x 3 m (3,84x2,84) – **UK10040032**
- 4 x 4 m (3,84x3,84) – **UK100400101**
- 4 x 5 m (3,84x4,84) – **UK10040041**
- 5 x 4 m (4,84x3,84) – **UK10040038**
- 5 x 5 m (4,84x4,84) – **UK100400201**

Basement size is shown in brackets.

- Wall thickness 34 mm T&G;
- Large canopy;
- Wall Boards are flat faced with softly rounded edges;
- Double grooved interlock;
- The corbel of the roof around the whole house;
- Glazed windows with original decorative beading;
- The cabin includes the floor;
- The doors and the windows can be supplied either left, or right-hand.



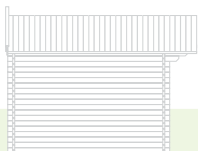
Log Cabins



(34mm)

Roofing shingles and veranda are supplied as optional extras.

Note: Laura 3x3 m and 3x4 m has single window in front.



Basia

Log Cabins

3 x 3 m (2,82 x 2,82) – **UK10020600**

4 x 3 m (3,82 x 2,82) – **UK10020601N**

Basement size is shown in brackets.

- Wall thickness 34 mm T&G;
- Wall boards are flat faced with softly rounded edges;
- Double grooved interlock
- The corbel of the roof around the whole house;
- The canopy;
- Glazed double door with two immobile parts that are installed from both sides;
- The cabin includes the floor.



Roofing shingles and veranda are supplied as optional extras.



(34mm)



Darek

4,5 x 3 m (4,32 x 2,82) – **UK100700802**

Basement size is shown in brackets.

- Wall thickness 34 mm T&G;
- Wall boards are flat faced with softly rounded edges;
- Double grooved interlock;
- The corbel of the roof around the whole house;
- Canopy;
- Two premises with separate entries;
- Double door + side shed door;
- The shed includes the floor.



** Shingles are supplied as optional extras*



(34mm)



Daniel

3 x 2,5 (2,82 x 2,32) m – **UK20010013N**

Basement size is shown in brackets.

- Wall thickness 34 mm;
- Wall boards are flat faced with softly rounded edges;
- Double grooved interlock;
- The corbel of the roof around the whole house;
- Canopy;
- Double door;
- The shed includes the floor;



** Shingles are supplied as optional extras*



(34mm)



Lidka

- 3 x 3 m (2,84x2,84) – **UK10061020N**
- 3 x 4 m (2,84x3,84) – **UK10061040**
- 4 x 3 m (3,84x2,84) – **UK10061050N**
- 4 x 4 m (3,84x3,84) – **UK10061010**
- 4 x 5 m (3,84x4,84) – **UK10061070**
- 5 x 4 m (4,84x3,84) – **UK10061080**
- 5 x 5 m (4,84x4,84) – **UK10061060N**

Basement size is shown in brackets.

- Wall thickness 44 mm T&G;
- Wall boards are flat faced with softly rounded edges;
- Double grooved interlock;
- The corbel of the roof around the whole house;
- Large canopy;
- Double glazed windows and door;
- The cabin includes the floor;
- The doors and the windows can be supplied either left, or right-hand.



Log Cabins

Note: Lidka 3x3 m and 3x4 m has single window in front.

Roofing shingles and veranda are supplied as optional extras.



(44mm)



Dorota

- 3 x 3 m (2,84 x 2,84) – **UK10090218NR**
- 3 x 4 m (2,84 x 3,84) – **UK10090219**
- 4 x 3 m (3,84 x 2,84) – **UK10090220N**
- 4 x 4 m (3,84 x 3,84) – **UK10090221N**
- 4 x 5 m (3,84 x 4,84) – **UK10090222**
- 5 x 4 m (4,84 x 3,84) – **UK10090223N**
- 5 x 5 m (4,84 x 4,84) – **UK10090224**

Basement size is shown in brackets.

- Wall thickness 44 mm T&G;
- Wall Boards are flat faced with softly rounded edges;
- Double glazed door and windows;
- The corbel of the roof around the whole house;
- The cabin includes the floor;
- Extra windows shutters available.



Log Cabins

Roofing shingles and veranda are supplied as optional extras.

Note: Dorota 3x3 m and 3x4 m has single window in front.



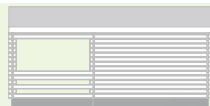
(44mm)

Rob

Hot tub cabin
Living area 12,4 m²

- 4x6 (3,82x5,85) – **UK100800401**
- Basement size is shown in brackets.

- Wall thickness 44 mm;
- Double grooved interlock;
- Wall boards are flat faced with softly rounded edges;
- The corbel of the roof around the whole house;
- Veranda with large canopy 2,4 m;
- Double glazed windows and door;
- The doors and windows can be supplied either left, or right-hand;
- The cabin includes the roof and floor;
- Extra windows shutters available.



Roofing shingles are supplied as optional extras.



(44mm)

Ala 4x3

34 mm - **UK2800109022S**

44 mm* - **UK2800109021S**

Basement size required: 3.84 x 2.84

- Canopy/porch 0.80 m
- The cabin includes floor and roof boards - 20 mm T&G
- There are one single window in the front and one on the side wall .
- Total high of the cabin ~ 2,5 m. Planning permission is not necessary in UK.

**Ala 4x3 in 44 mm comes with double glazed windows and door.*

**Roofing shingles are supplied as optional extras*



(34mm)



(44mm)

Ala 5x4

34 mm - **UK280010901S34**

44 mm* - **UK280010901**

Basement size required: 4.84 x 3.84

- Canopy/porch 0.80 m
- The cabin includes floor and roof boards - 20 mm T&G
- There are one double window in the front and one on the side wall
- Total high of the cabin ~ 2,5 m. Planning permission is not necessary in UK.

**Ala 5x4 in 44 mm comes with double glazed windows and door*

**Roofing shingles are supplied as optional extras*



(34mm)



(44mm)

Roman 4x3

34 mm - **UK2800109041S**

44 mm - **UK2800109041S44**

Basement size required: 3.84 x 2.84

- The cabin includes floor and roof boards - 20 mm T&G
- There are one single window in the front and one on the each side wall
- Front and back canopy - 0.20 m / Side canopies - 0.30 m
- Total high of the cabin ~ 2,5 m. Planning permission is not necessary in UK.

**Roman 4x3 in 44 mm comes with double glazed windows and door*

**Roofing shingles are supplied as optional extras*



(34mm)



(44mm)

Roman 5x4

34 mm - **UK2800109031S34**
 44 mm* - **UK2800109031S**
 Basement size required: 4.84 x 3.84

- The cabin includes floor and roof boards - 20 mm T&G
- There are one double window in the front and one on each the side wall
- Front and back canopy - 0.20 m / Side canopies - 0.30 m
- Total high of the cabin ~ 2,5 m. Planning permission is not necessary in UK.

* Roman 5x4 in 44 mm comes with double glazed windows and door
 * Roofing shingles are supplied as optional extras



(34mm)



(44mm)



Garage

Garage 3 x 5 m (34 mm) – **UK100016**
 Garage 4 x 6 m (44 mm) – **UK94060010**

Up and over garage gates - **UKRAL8014**

- Wall boards are flat with softly rounded edges;
- Double grooved interlock;
- The corbel of the roof around the whole garage;
- Glazed window and door;
- The doors and the windows can be supplied either left, or right-hand;
- Garage is supplied without the floor;
- 34 mm 3x5 m garage has no side window.

*Up and over panel door is extra.
 Shingles are supplied as optional extras.*



(34mm)



(44mm)

Marian

4 x 5,85 m (3,84 x 5,69) – **UK10080100NT**
 Basement size is shown in brackets.

- Wall thickness 68 mm T&G;
- Wall boards are flat faced with softly rounded edges;
- Triple grooved interlock;
- The corbel of the roof around the whole house;
- Terrace included;
- Double glazed windows and door;
- The cabin includes the floor.



Log Cabins

Roofing shingles supplied as optional extras.



(68mm)



Log Cabins

Pawel

4x4 (3,84*3,84) – **UK10090217NT**

4x5 (3,84*4,84) – **UK10090212**

5x4 (4,84*3,84) – **UK10090215NT**

5x5 (4,84*4,84) – **UK10090214NT**

Basement size is shown in brackets.

- Wall thickness 68 mm T&G;
- Wall boards are flat faced with softly rounded edges;
- Triple grooved interlock;
- The corbel of the roof around the whole house;
- Double glazed windows and single door;
- The cabin includes the floor



(68mm)

Roofing shingles supplied as optional extras.

Filip 6x6

6x6 (5,823x5,823) - **UK10080040**

Basement size is shown in brackets.

Filip with double roof construction - **UK10080041**

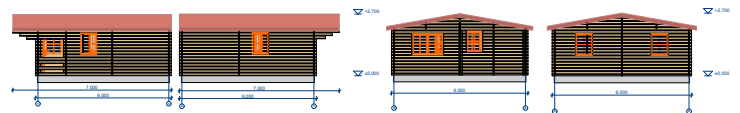
- Wall thickness 44 mm;
- Double grooved interlock;
- Wall boards are flat faced with softly rounded edges;
- The corbel of the roof around the whole house;
- Large canopy – 1 m;
- Veranda with canopy 1,9 m;
- Double Glazed windows and doors;
- The doors and windows can be supplied either left, or right-hand;
- The cabin includes the roof and floor.

Living area 29 m²

Possible furnishing: 2 Bedrooms, WC/Bath, Kitchen, Hall.

Double roof supplied as optional extras.

Shutters and bitumen shingles are supplied as optional extras.



Radek 6x6

6x6 (5,823x5,823) - **UK10080060**

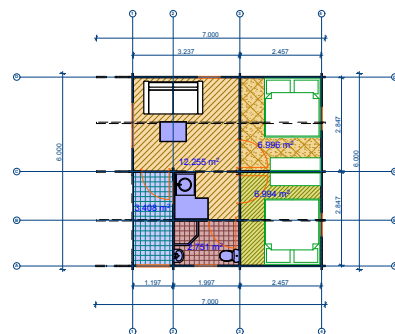
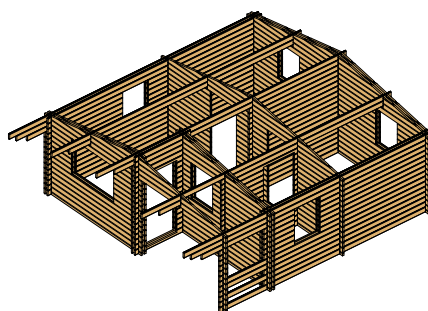
Basement size is shown in brackets.

- Wall thickness 44–50–44 mm;
- Double grooved interlock;
- Wall boards are flat faced with softly rounded edges;
- The corbel of the roof around the whole house;
- Large canopy – 1 m;
- Veranda with canopy 1,9 m;
- Double Glazed windows and doors;
- The doors and windows can be supplied either left, or right-hand;
- The cabin includes the floor and double roof construction.

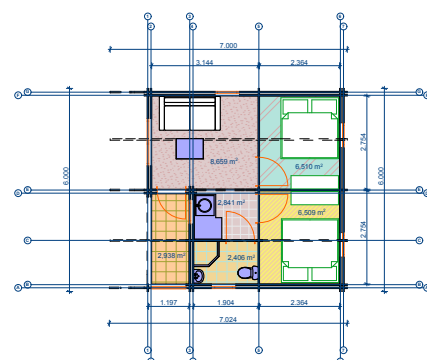
Living area 27 m²

Possible furnishing: 2 Bedrooms, WC/Bath, Kitchen, hall.

Shutters and bitumen shingles are supplied as optional extras.



(44mm)



double wall
44-50-44

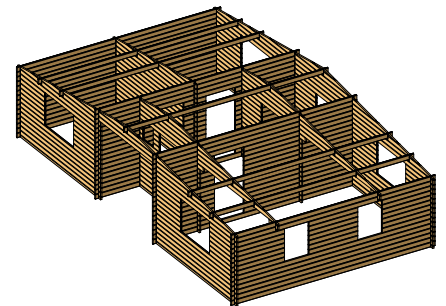
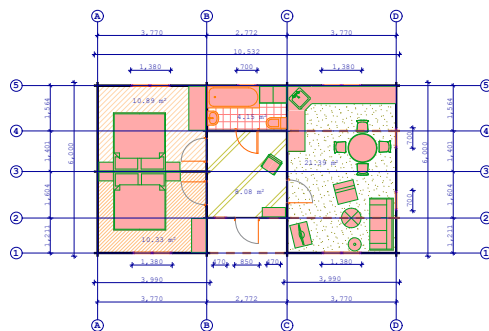
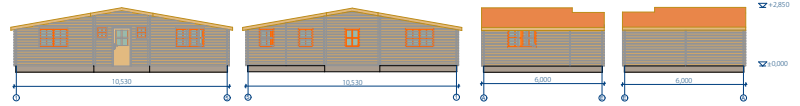
Krysia 11x6

11x6 (10,355x5,824) - **UK10080035**
 Basement size is shown in brackets.

- Wall thickness 44 mm;
- Double grooved interlock;
- Wall boards are flat faced with softly rounded edges;
- The corbel of the roof around the whole house;
- Large canopy – 1,2 m;
- Double glazed windows and door;
- The cabin includes the floor.

Living area 55 m²

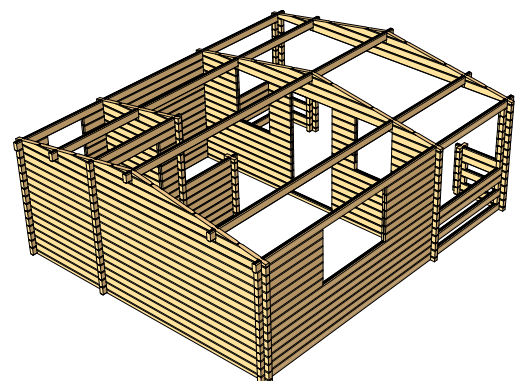
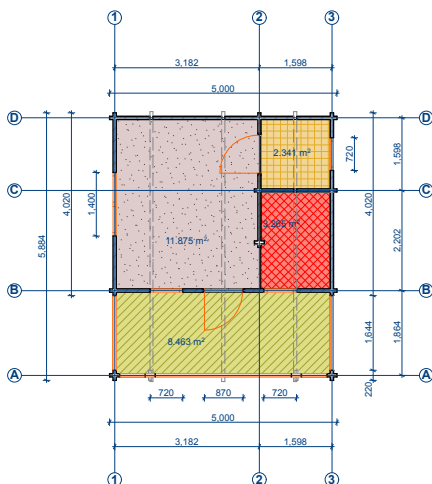
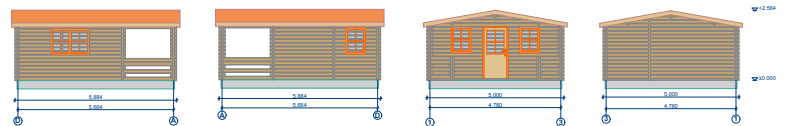
* Bitumen shingles and Shutters are supplied as optional extras

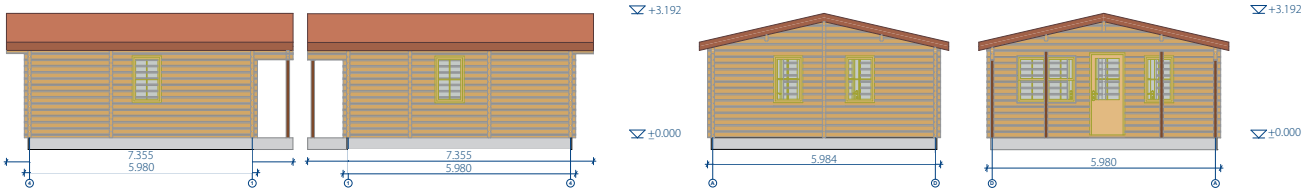


Gosia 5x5,9

5x5,9 (4,83x5,73) – **UK680010**

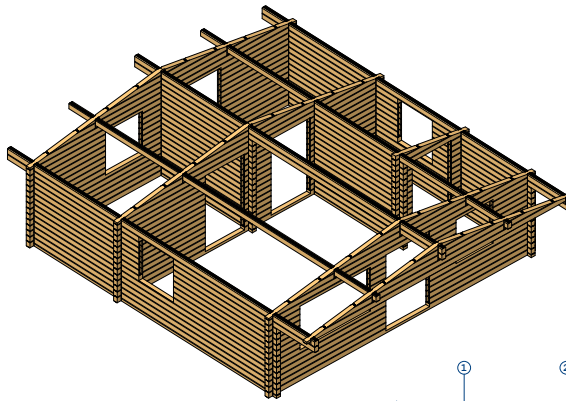
- Wall Boards are flat faced with softly rounded edges;
- Triple grooved interlock;
- The corbel of the roof around the whole cabin;
- Terrace;
- Double Glazed windows and door with ventilation function;
- The cabin includes the floor and roof construction;
- Bitumens shingles supplied as an optional extra.





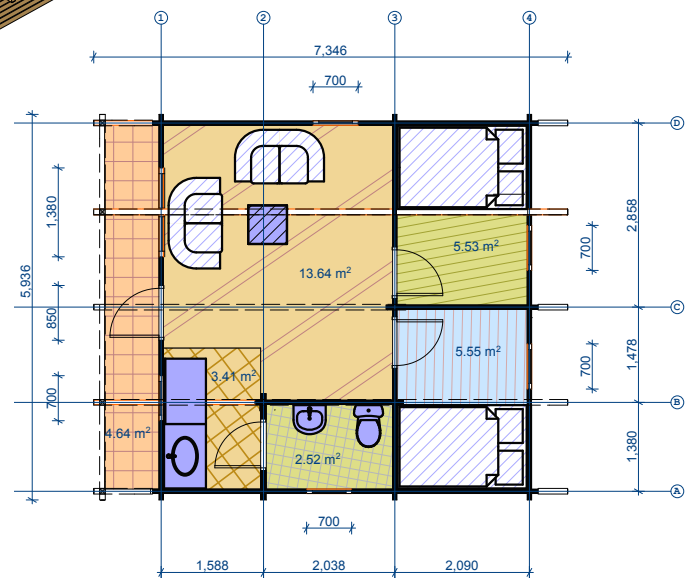
Bartek

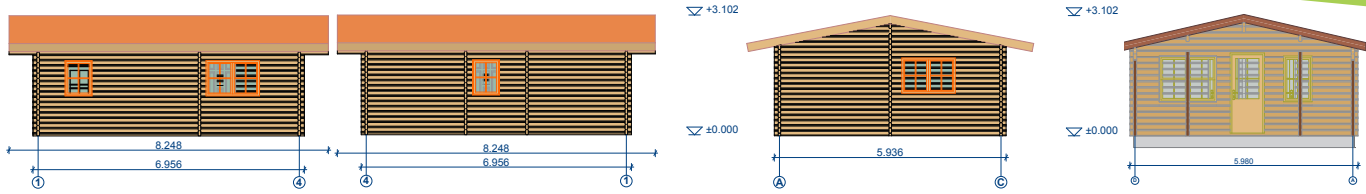
6x6 m (5,85x5,85) - **UK1006810A**
 Basement size is shown in brackets.



- Wall thickness 68 mm;
- Triple grooved interlock;
- Wall boards are flat faced with softly rounded edges;
- The corbel of the roof around the whole house;
- Terrace is included;
- Double glazed windows and door;
- The cabin includes the roof;
- Double roof construction included;
- Floor boards 26 mm thickness.

Roofing shingles are supplied as optional extras.

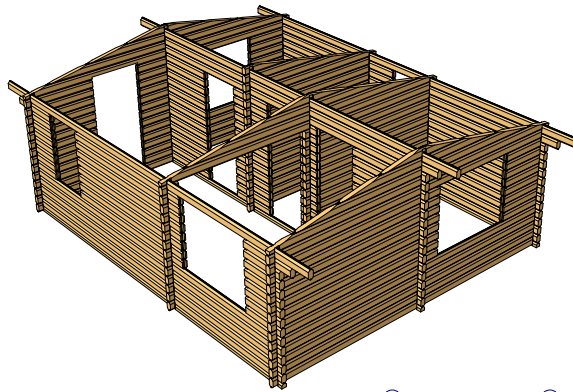




(68mm)

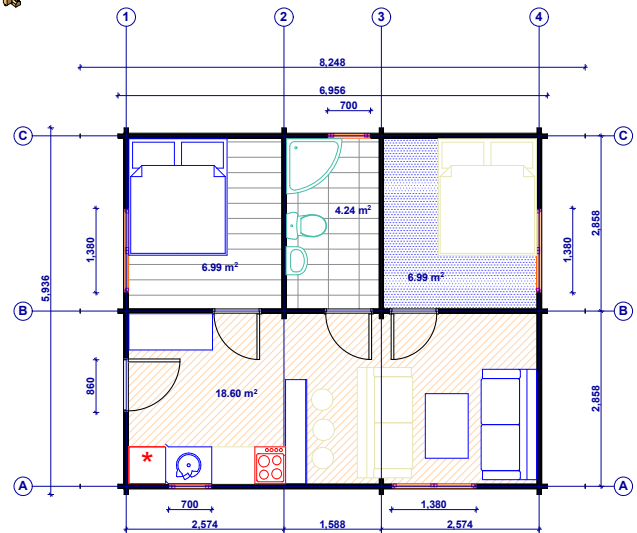
Bogdan

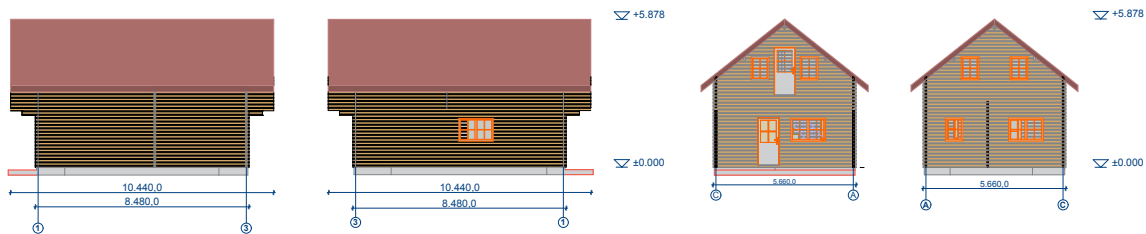
6x7 m (5,85x6,85) - **UK10050070**
 Basement size is shown in brackets.



- Wall thickness 68 mm;
- Triple grooved interlock;
- Wall boards are flat faced with softly rounded edges;
- The corbel of the roof around the whole house;
- Double glazed windows and door;
- The cabin includes the roof;
- Double roof construction included;
- Floor boards 26 mm thickness.

Roofing shingles and veranda are supplied as optional extras.



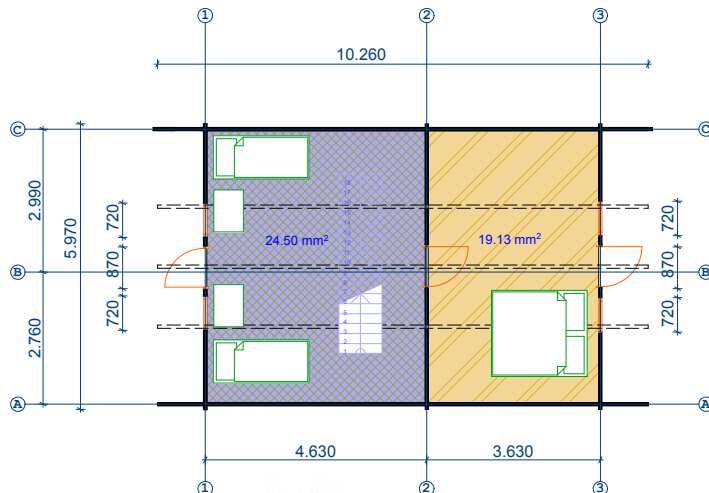
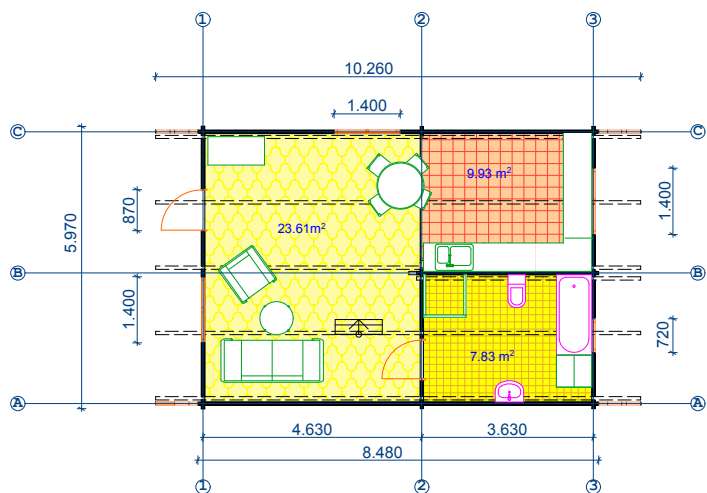


(68mm)

Ludwik 95 sq.m

ground floor

first floor



Two Storey Log Cabin 95 m²

6x9 m (5,85x8,75) - **UK10050040**

- Wall thickness 68 mm T&G;
- Roof cover - external - plywood, internal - planed boards;
- Floors - 26 mm thickness;
- The corbel of the roof around the whole house;
- Double glazed windows and doors;
- Roof area - 110 sq.m;
- Stairs included;
- Double roof construction included.

Roofing shingles and veranda are supplied as optional extras.



Bitumen Tiles

Bourne
Green



UK431-1001

Grey



UK433-1060

Red



UK432-1029

Hexham

Green



UK421-1611

Ridge/Egde Green tiles - 0001

Grey



UK423-1610

Ridge/Egde Grey tiles - 0022

Red



UK422-0822

Ridge/Egde Red tiles - 0025

One pack usual tiles contains 3 m²

One pack Ridge/edge tiles contains - 5 m², cover 20 linear m of roof edge or 12 m of ridge.

Accessories



Kit of shutters for
3 m wide cabins - **UK10050102V3X**
4 and 5 m wide - **UK10050102V5X**
Shutters for Norbert - **UK10050102S**



Please ask whether shutters will fit for your cabin.



*style of veranda may vary depending on certain cabin model.



(34mm)

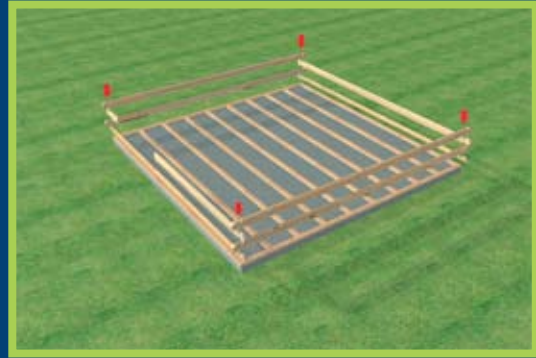
34 mm Verandas
Veranda for 3 m wide cabin - **UK10048910**
Veranda for 4 m wide cabin - **UK10048920**
Veranda for 5 m wide cabin - **UK10048920WT**



(44mm)

44 mm Veranda for Norbert - **UK10050102V**
44 mm Verandas
Veranda for 3 m wide cabin - **UK10050103**
Veranda for 4 m wide cabin - **UK10050104**
Veranda for 5 m wide cabin - **UK10050105**

Assembly guide



FOR MORE INFORMATION PLEASE CONTACT: